

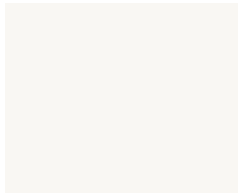
zehnder

always the
best climate

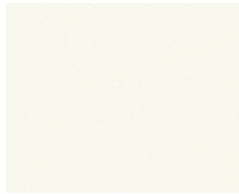
Colour System



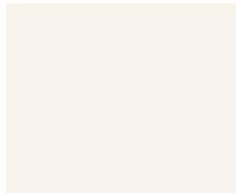
Architectural



White Matt
0556



White Quartz
0521



Pure White
RAL 9010 / 9010*



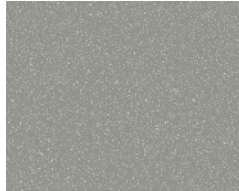
Aluminium Look
9551*



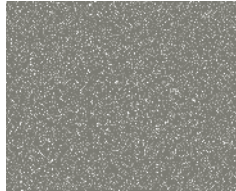
Inox Look
0332*



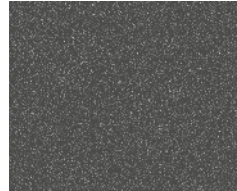
White Aluminium
9006*



Titane
0335*



Grey Aluminium
9007*



Anthracite
0346



Volcanic
0336



Anthracite Grey
RAL 7016 / 7016*



Traffic Black
RAL 9017 / 9217



Jet Black
RAL 9005 / 9005*

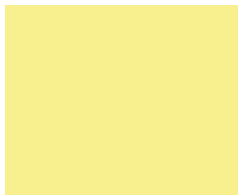


Black Matt
0557



Black Quartz
0550

Tonic



Lemon
0515*



Traffic Yellow
RAL 1023 / 1023*



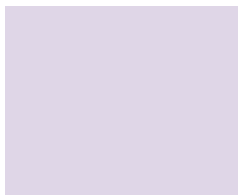
Orange Quartz
0528



Flame Red
RAL 3000 / 3000*



Ruby Red
RAL 3003 / 3003*



Mauve
0517*



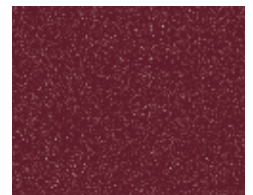
Violet
0518*



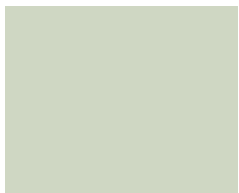
Strawberry
NCS-S-2065-R20B / 3770



Dark Purple
0848



Amethyst Quartz
0516



Lichen
NCS-S-2010-G60Y / 8723



Spring Green
0846



Pacific Blue
0519



Horizon Blue
0520*



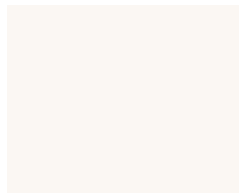
Prussian Blue
0555*

* Diese Farben werden glänzend, alle anderen matt ausgeführt. – These colours are finished with a gloss finish; all other colours are matt-finished. – Les teintes marquées d'un astérisque sont de finition brillante, les autres de finition mate. – I colori contrassegnati con l'asterisco hanno finitura brillante, gli altri opaca. – De kleuren aangeduid met een sterretje zijn glanzend, de andere zijn mat. – Estos colores presentan un acabado brillante; el resto es en acabado mate. – Tak oznaczone kolory wykonane są w połysku, pozostałe w matcie. – Данные цвета являются глянцевыми, остальные цвета – матовые.

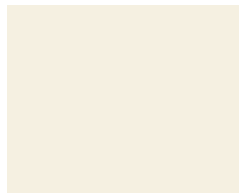
Einige Oberflächen sind nur für ausgewählte Produkte erhältlich. – Some finishes may be available for selected products only. – Certaines finitions ne sont disponibles que pour une sélection de produits. – Alcune finiture sono disponibili solo per determinati prodotti. – Sommige coatings zijn alleen toepasbaar op bepaalde producten. – Algunas superficies estan solamente disponibles para determinados productos. – Niektóre powierzchnie dostępne są jedynie dla wybranych produktów. – Некоторые варианты покрытий доступны только для определенно выбранных моделей.

RAL and NCS-codes are descriptions of manufacturer.

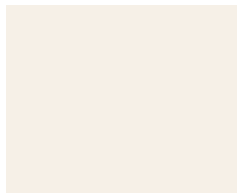
Natural



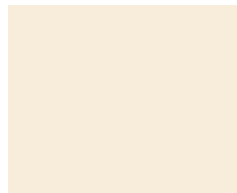
Edelweiss
0067



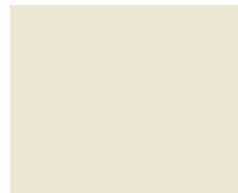
Cream
RAL 9001 / 9001*



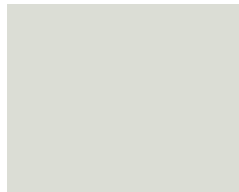
Pergamon
0081*



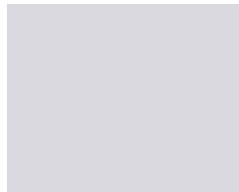
Jasmin
0072



Oyster White
RAL 1013 / 1013*



Grey White
RAL 9002 / 9002*



Chinchilla
0064



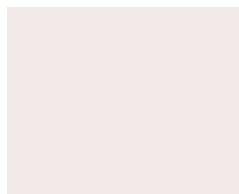
Manhattan
0077*



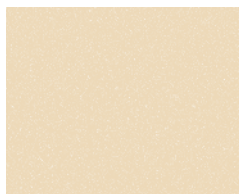
Natura
0035*



Bahama
0054*



Petal
0510*



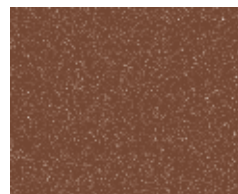
Sand Quartz
0522



Beige Quartz
0523



Caramel Quartz
0511



Terracotta Quartz
0512



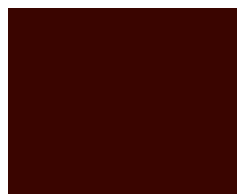
Gold Look
0514*



Brown Quartz
0529

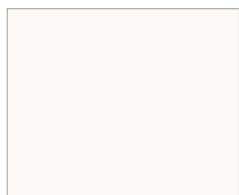


Dark Brown
0847



Chocolate Brown
RAL 8017 / 8017*

Standard



Traffic White
RAL 9016 / 9016*

Surfaces



Inox



Chrome
0008

Trotz äußerster Sorgfalt bei der Herstellung dieser Farbkarte als auch beim Lackiervorgang unserer Heizkörper sind leichte Farbabweichungen, je nach Fertigungsreihe und gegenüber anderen Farbträgern (Keramik, Papier, Metall ...) möglich. – Despite every care having been taken during the manufacturing process of this colour chart and of course when coating our radiators, small variations may occur between different production runs and different reference materials (ceramic, paper, metal, ...). – Malgré tout le soin apporté à la fabrication de ce nuancier et à la mise en peinture de nos radiateurs, de faibles nuances de teinte et de brillance peuvent se produire par rapport aux couleurs de référence, aux différentes matières en cause (céramique, papier, métal ...) et suivant les lots de radiateurs. – Nonostante le cure apportate alla realizzazione di questa cartella colori ed i continui controlli di qualità effettuati sulla verniciatura dei nostri caloriferi, il prodotto finito può presentare lievi differenze rispetto alla cartella colori o ad altri materiali di riferimento (ceramica, carta, metallo ...). – Ondanks de grote zorg die is besteed aan de productie van deze kleurenkaart en de continue kwaliteitscontrole bij het coaten van de radiatoren, kunnen kleine kleurnuances ontstaan in de radiatoren onderling en in vergelijking tot ander referentiemateriaal (keramiek, papier, metaal ...). – A pesar del cuidado con el que se ha realizado esta carta de colores y que se tiene en la fabricación de nuestros radiadores, pueden existir pequeñas variaciones de color dependiendo de los diferentes materiales (cerámica, papel, metal, etc.). – Pomimo dołożenia wszelkiej staranności w trakcie opracowywania niniejszego wzornika, jak i gotowych produktów, należy się liczyć z niewielkimi odchyłkami kolorów, wynikającymi z różnic serii produkcyjnych i podkładów użytych do odzwierciedlenia kolorów (papier, tworzywo, metal, itd.). – Несмотря на стабильность производственного процесса возможны отклонения в оттенках цветов представленных образцов и радиаторов в различных партиях, а также расхождения с тем же цветом, нанесенным на другие материалы (керамика, бумага, металл).

Z-V0217-RAD-COC, subject to change without notice



Climaconforto
Equipamento, Desumidificação e Climatização, Lda.

Avenida da Conduta, 836
4420-619 GONDOMAR
PORTUGAL

Tel:(+351) 22 372 03 92 Fax:(+351) 22 379 09 08
info@climaconforto.pt www.climaconforto.pt